



ANCHOR LÅS

Padlocks manufactured in Sweden since 1930

2025



ANCHOR LÅS AB is a privately owned lock manufacturer specialized in developing and manufacturing padlocks and locker locks. In our product range we can offer everything from locks suitable for the gym locker up to premium padlocks.

ANCHOR LÅS AB has a long tradition of developing and producing locks in Eskilstuna, Sweden. As more and more companies choose to place their production in low-cost countries, ANCHOR LÅS invests in its own production in Sweden. By gathering sales, product development and production locally, we can quickly adapt our products to meet our customers' requests.

By controlling our own production, we can stay flexible and guarantee that our products are of the highest quality. This, together with our experienced staff make us a valued partner and supplier.



We reserve the right to make changes to the catalog's content and range.

We also reserve the right for any printing errors and technical changes

TABLE OF CONTENTS (1/2)

PADLOCKS

ANCHOR 880-4	Grade 5 ANCHOR disc cylinder, 9 discs.	Page 5
ANCHOR 800-3	Grade 4 ANCHOR disc cylinder, 9 discs.	Page 7
ANCHOR 630-3	Grade 4 ANCHOR disc cylinder, 6 discs.	Page 9
ANCHOR 820-2	Grade 3 ANCHOR disc cylinder, 9 discs.	Page 11
ANCHOR 620-2	Grade 3 ANCHOR disc cylinder, 6 discs.	Page 13
ANCHOR 810-1	Grade 2 ANCHOR disc cylinder, 9 discs.	Page 15
ANCHOR 610-1	Grade 2 ANCHOR disc cylinder, 6 discs.	Page 17
ANCHOR 410-1	Grade 2 ANCHOR disc cylinder, 5 pins.	Page 19
ANCHOR 850-5	Grade 6 OVAL cylinder.	Page 21
ANCHOR 848-4	Grade 5 OVAL cylinder.	Page 22
ANCHOR 840-4	Grade 5 OVAL cylinder.	Page 23
ANCHOR 830-3	Grade 4 OVAL cylinder.	Page 24
ANCHOR 802-2 Oval	Grade 3 OVAL cylinder.	Page 25
ANCHOR 802-2 Snowman	Grade 3 SNOWMAN cylinder.	Page 26
ANCHOR 590-6	Grade 6 EUROPROFILE cylinder.	Page 27
ANCHOR 580-5	Grade 5 EUROPROFILE cylinder.	Page 28
ANCHOR 801-1 IP68	Grade 2 OVAL cylinder IP68	Page 29
ANCHOR 802-2 IP68	Grade 3 OVAL cylinder IP68	Page 30
ANCHOR 830-3 IP68	Grade 4 OVAL cylinder IP68	Page 31
ANCHOR 848-4 IP68	Grade 5 OVAL cylinder IP68	Page 32
ANCHOR 850-5 IP68	Grade 6 OVAL cylinder IP68	Page 33
ANCHOR 560-3 IP68	Grade 3 EUROPROFILE cylinder IP68	Page 34
ANCHOR 570-4 IP68	Grade 4 EUROPROFILE cylinder IP68	Page 35
ANCHOR 510-1	Switch lock, OVAL cylinder	Page 36
ANCHOR 510-1 EL	Switch lock, EL Oval cylinder	Page 37
ANCHOR 530-3 Block lock	Block lock, OVAL cylinder	Page 38
ANCHOR 375-40	Combination lock 40mm	Page 39
ANCHOR 375-30	Combination lock 30mm	Page 40
ANCHOR 350	350-Series, All-round locks.	Page 41



TABLE OF CONTENTS (2/2)

HASPS AND ACCESSORIES

ANCHOR 921/923	Grade 5/ 6 Hasp 921/923	Page 42
ANCHOR 901/903	Grade 4 Hasp 901/903	Page 43
ANCHOR 960-3	Grade 4 shared locking	Page 44
ANCHOR 950	Hasp 950	Page 45
ANCHOR 940	Hasp 940	Page 46
ANCHOR 915	Hasp 915	Page 47
ANCHOR CYLINDER COVER	Cylinder cover IP68 Oval	Page 48
ANCHOR CYLINDER COVER	Cylinder cover IP68 XL Oval	Page 49
ANCHOR CYLINDER COVER	Cylinder cover IP68 Round	Page 50
WEATHER PROTECTION IP68	Weather protection IP68	Page 51
WEATHER PROTECTION	Weather protection Grade 3 & 4	Page 52
ANCHOR VANDAL RING	Protection for cylinder with knob	Page 53
PADLOCK CHAIN	With tube	Page 54
PADLOCK CHAIN	Retrofit	Page 55

CAMLOCKS

ANCHOR 890	Camlock	Page 56
ANCHOR 892	Camlock	Page 58
CAMLOCK ACCESSORIES	Catch	Page 60

AFTER SALES SERVICE PRODUCTS

KEYCUTTING MACHINE, INDICATOR & DISC CODE BOXES		Page 61
ANCHOR GREASE	Grease	Page 62
KEYS & KEYBLANKS		Page 63

COMPONENTS

SPARE PARTS		Page 64
-------------	--	---------

"The bitterness of poor quality remains long after the sweetness of low price is forgotten"
// Benjamin Franklin





ROBUST
HÄNGLÅS
SVERIGE SKÅPLÅS
SÄKERHETSKLASSADE TRYGGHET
ESKILSTUNA
ANCHOR LÅS
SÄKERHET
PRODUCERAT I SVERIGE
DRIFTSÄKER KVALITET TRADITION
KUNSKAP
SVENSKT STÅL
PRODUKTUTVECKLING
FLEXIBILITET



Available in Weather Protected version (WP)

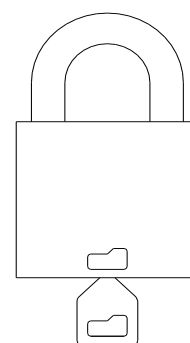
ANCHOR 880-4

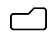
Grade 5 padlock for very high security applications. Suitable for locking containers, train wagons, heavy sliding doors and the like. The padlock is equipped with the ANCHOR disc cylinder and 2 keys. The cylinder is protected by a 4.5mm thick hardened free spinning protection plate. The padlock is available in key differ (std), keyed alike or in masterkey system. Removable shackle is available as an option for applications with limited space.

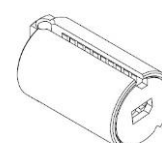


ANCHOR Disc cylinder

- > ANCHOR Disc cylinder, 9 discs, 1.5 million different key combinations.
- > The cylinder has no spring loaded parts, which in other types of mechanism can cause malfunction through wear, dirt, moisture, corrosion or freezing.
- > Maximum resistance against picking and manipulation.
- > The lock cylinder offers extensive masterkeying possibilities. All our padlocks and camlocks can be made to operate with just one key.
- > Our extra strong key, thickness 3 mm, is made of nickel silver. The key is design patented.

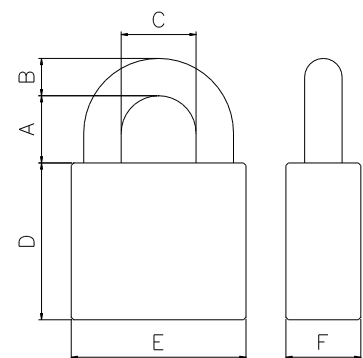


Use symbol  to insert key in correct position.





- > Padlock body: 70mm hardened steel
- > Shackle: 15mm hardened steel
- > Plating: Chrome
- > Cylinder type: ANCHOR Disc cylinder
- > Shackle heights: 27 and 50mm
- > Certification: Class 4 according to SSF 014 utg 3.
Grade 5 according to EN 12320:2012
- > Options: Carded (CARDED)
Removable Shackle (RS)
Keyed Alike (KA)
Master Key System (MK)
Excluding discs and keys (EXCL DISCS)
Completion of Keyed Alike (COMP KA)
Completion of Master Key System (COMP MK)



A	B	C	D	E	F
27/50	15	29,5	63	70	30



Available in Weather Protected version (WP)



Available in protected shackle version (PS)

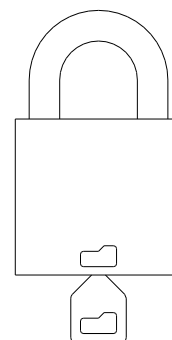



ANCHOR 800-3

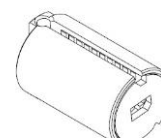
Grade 4 padlock for high security applications. Suitable for locking motorcycles, trucks, road barriers and the like. The padlock is equipped with the ANCHOR disc cylinder and 2 keys. The cylinder is protected by a 3mm thick hardened free spinning protection plate. The padlock is available in key differ (std), keyed alike or in masterkey system. Removable shackle is available as an option for applications with limited space. Another option is the weather protected version with concealed O-rings in the shackle holes and a protective cap for the cylinder hole.

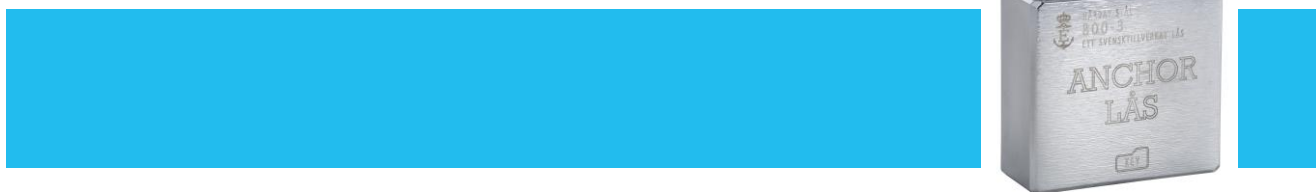
ANCHOR Disc cylinder

- > ANCHOR Disc cylinder, 9 discs, 1.5 million different key combinations.
- > The cylinder has no spring-loaded parts, which in other types of mechanism can cause malfunction through wear, dirt, moisture, corrosion or freezing.
- > Maximum resistance against picking and manipulation.
- > The lock cylinder offers extensive master keying possibilities. All our padlocks and camlocks can be made to operate with just one key.
- > Our extra strong key, thickness 3 mm, is made of nickel silver. The key is design patented.



Use symbol  to insert key in correct position.





- > Padlock body: 60mm hardened steel
- > Shackle: 11mm hardened steel
- > Plating: Chrome
- > Cylinder type: ANCHOR Disc cylinder
- > Shackle heights: 28 and 50mm
- > Certification: Class 3 according to SSF 014 rev 3.
Grade 4 according to EN 12320:2012
- > Options:

Carded (CARDED)

Removable Shackle (RS)

Protected Shackle (PS)

Keyed Alike (KA)

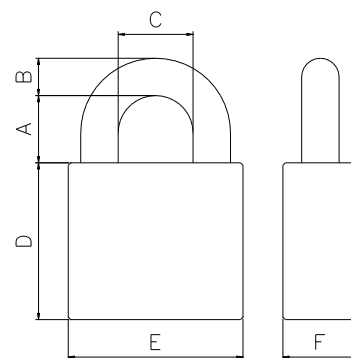
Master Key System (MK)

Excluding discs and keys (EXCL DISCS)

Completion of Keyed Alike (COMP KA)

Completion of Master Key System (COMP MK)

Weather protection (WP)



A	B	C	D	E	F
28/50	11	28	56 / 88 PS	60	25

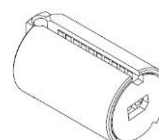
ANCHOR 630-3



Grade 4 padlock for high security applications. Suitable for locking motorcycles, trucks, road barriers and the like. The padlock is equipped with the ANCHOR disc cylinder and 2 keys. The cylinder is protected by a 3mm thick hardened free spinning protection plate. The padlock is available in key differ (std) and keyed alike.

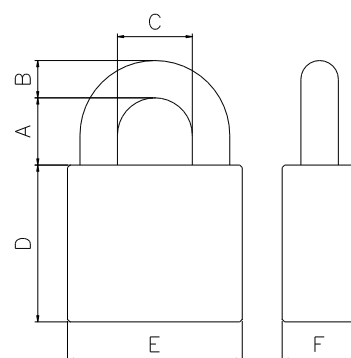
ANCHOR Disc cylinder

- > ANCHOR Disc cylinder, 6 discs, 15.000 different key combinations.
- > The cylinder has no spring-loaded parts, which in other types of mechanism can cause malfunction through wear, dirt, moisture, corrosion or freezing.
- > Maximum resistance against picking and manipulation.
- > Our extra strong key, thickness 3 mm, is made of nickel silver. The key is design patented.





- > Padlock body: 60mm hardened steel
- > Shackle: 11mm hardened steel
- > Plating: Chrome
- > Cylinder type: ANCHOR Disc cylinder
- > Shackle heights: 28 and 50mm
- > Certification: Class 3 according to SSF 014 rev 3.
Grade 4 according to EN 12320:2012
- > Options: Carded (CARDED)
Keyed Alike (KA)
Completion of Keyed Alike (COMP KA)



A	B	C	D	E	F
28/50	11	28	44	60	25



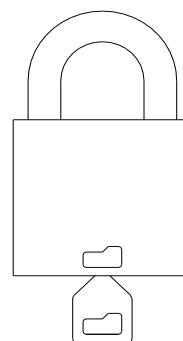
ANCHOR 820-2

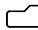


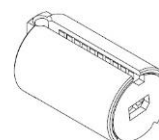
Grade 3 padlock manufactured in all rust resistant materials. Suitable for locking toolboxes, lockers, trailers, power station switches and the like. The padlock is equipped with the ANCHOR disc cylinder and 2 keys. The padlock is available in key differ (std), keyed alike or in masterkey system. Removable shackle is available as an option for applications with limited space.

ANCHOR Disc cylinder

- > ANCHOR Disc cylinder, 9 discs, 1.5 million different key combinations.
- > The cylinder has no spring-loaded parts, which in other types of mechanism can cause malfunction through wear, dirt, moisture, corrosion or freezing.
- > Maximum resistance against picking and manipulation.
- > The lock cylinder offers extensive masterkeying possibilities. All our padlocks and camlocks can be made to operate with just one key.
- > Our extra strong key, thickness 3 mm, is made of nickel silver. The key is design patented.



Use symbol  to insert key in correct position.

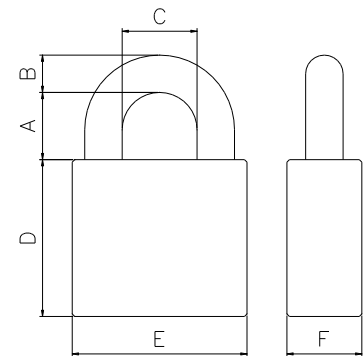




- > Padlock body: 46mm brass
- > Shackle: 8mm stainless steel
- > Plating: Chrome
- > Cylinder type: ANCHOR Disc cylinder
- > Shackle heights: 25mm, 60mm and 110mm
- > Certification: Class 2 according to SSF 014 rev 3.
Grade 3 according to EN 12320:2012

> Options:

- Carded (CARDED)
- 2 x Pack (TWIN CARDED)
- Removable Shackle (RS)
- Keyed Alike (KA)
- Master Key System (MK)
- Excluding discs and keys (EXCL DISCS)
- Completion of Keyed Alike (COMP KA)
- Completion of Master Key System (COMP MK)
- Brass Finish (BR)



A	B	C	D	E	F
25/60/110	8	24	46	46	20



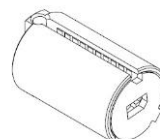
ANCHOR 620-2



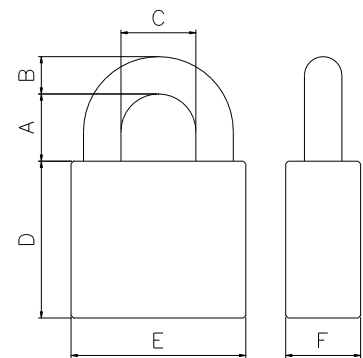
Grade 3 padlock manufactured in all rust resistant materials. Suitable for locking toolboxes, lockers, trailers, power station switches and the like. The padlock is equipped with the ANCHOR disc cylinder and 2 keys. The padlock is available in key differ (std) and keyed alike.

ANCHOR Disc cylinder

- > ANCHOR Disc cylinder, 6 discs, 15.000 different key combinations.
- > The cylinder has no spring-loaded parts, which in other types of mechanism can cause malfunction through wear, dirt, moisture, corrosion or freezing.
- > Maximum resistance against picking and manipulation.
- > Our extra strong key, thickness 3 mm, is made of nickel silver. The key is design patented.



- > Padlock body: 46mm brass
- > Shackle: 8mm stainless steel
- > Plating: Chrome
- > Cylinder type: ANCHOR Disc cylinder
- > Shackle heights: 25mm, 60mm and 110mm
- > Certification: Class 2 according to SSF 014 rev 3.
Grade 3 according to EN 12320:2012
- > Options: Carded (CARDED)
Keyed Alike (KA)
Completion of Keyed Alike (COMP KA)
Brass Finish (BR)



A	B	C	D	E	F
25	8	24	34	46	20



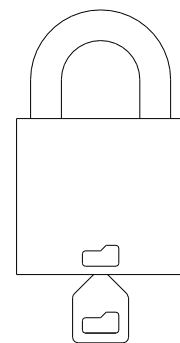
ANCHOR 810-1


Grade 2 padlock manufactured in all rust resistant materials. Suitable for locking cash boxes, toolboxes, lockers, power station switches and the like. The padlock is equipped with the ANCHOR disc cylinder and 2 keys. The padlock is available in key differ (std), keyed alike or in masterkey system.

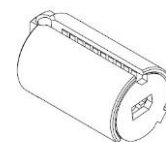


ANCHOR Disc cylinder

- > ANCHOR Disc cylinder, 9 discs, 1.5 million different key combinations.
- > The cylinder has no spring-loaded parts, which in other types of mechanism can cause malfunction through wear, dirt, moisture, corrosion or freezing.
- > Maximum resistance against picking and manipulation.
- > The lock cylinder offers extensive masterkeying possibilities. All our padlocks and camlocks can be made to operate with just one key.
- > Our extra strong key, thickness 3 mm, is made of nickel silver. The key is design patented.

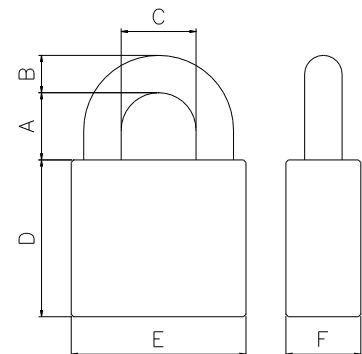


Use symbol  to insert key in correct position.





- > Padlock body: 39mm brass
- > Shackle: 6.5mm stainless steel
- > Plating: Brass
- > Cylinder type: ANCHOR Disc cylinder
- > Shackle heights: 20 and 80mm
- > Certification: Class 1 according to SSF 014 rev 3.
Grade 2 according to EN 12320:2012
- > Options: Carded (CARDED)
Keyed Alike (KA)
Master Key System (MK)
Excluding discs and keys (EXCL DISCS)
Completion of Keyed Alike (COMP KA)
Completion of Master Key System (COMP MK)
Brass Finish (BR)



A	B	C	D	E	F
20/80	6.5	20.5	40	39	19



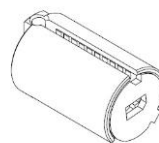
ANCHOR 610-1



Grade 2 padlock manufactured in all rust resistant materials. Suitable for locking cash boxes, toolboxes, lockers, power station switches and the like. The padlock is equipped with the ANCHOR disc cylinder and 2 keys. The padlock is available in key differ (std) and keyed alike.

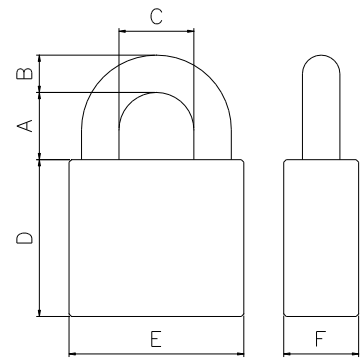
ANCHOR Disc cylinder

- > ANCHOR Disc cylinder, 6 discs, 15.000 different key combinations.
- > The cylinder has no spring-loaded parts, which in other types of mechanism can cause malfunction through wear, dirt, moisture, corrosion or freezing.
- > Maximum resistance against picking and manipulation.
- > Our extra strong key, thickness 3 mm, is made of nickel silver. The key is design patented.





- > Padlock body: 33mm brass
- > Shackle: 5mm stainless steel
- > Plating: Chrome
- > Cylinder type: ANCHOR Disc cylinder
- > Shackle heights: 20mm
- > Certification: Class 1 according to SSF 014 rev 3.
Grade 2 according to EN 12320:2012
- > Options: Carded (CARDED)
Keyed Alike (KA)
Completion of Keyed Alike (COMP KA)
Brass Finish (BR)



A	B	C	D	E	F
20	5	18	29	33	19



ANCHOR 410-1



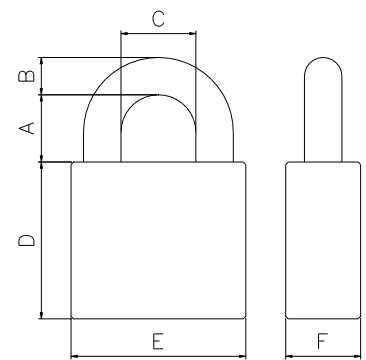
Grade 2 padlock manufactured in all rust resistant materials. Suitable for locking cash boxes, toolboxes, lockers, power station switches and the like. The padlock is equipped with a 5-pin key system and 2 keys. The padlock is available in key differ (std) and keyed alike.

ANCHOR 5-Pin cylinder 410

- > ANCHOR 5-Pin cylinder with 1 890 different key combinations.
- > Spool pins and asymmetric key profile to prevent picking.
- > Double ball blocking to prevent the lock from being picked with shims.
- > Stainless steel shackle and internal components in corrosive resistant materials makes the padlock ideal even in demanding applications like outdoor environments and swimming areas.



- > Padlock body: 40mm brass
- > Shackle: 6mm stainless steel
- > Plating: Brass
- > Cylinder type: 5-Pin cylinder
- > Shackle heights: 24mm
- > Certification: Class 1 according to SSF 014 rev 3.
Grade 2 according to EN 12320:2012
- > Options: Carded (CARDED)
Keyed Alike (KA)
Twin package (TW CARDED)



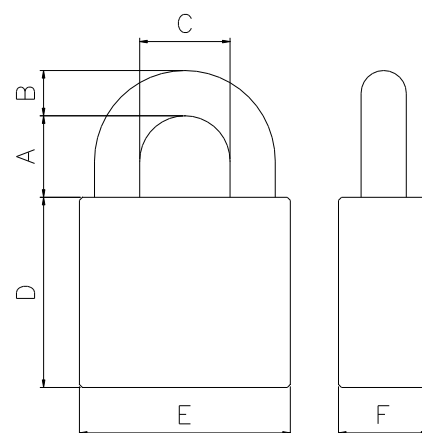
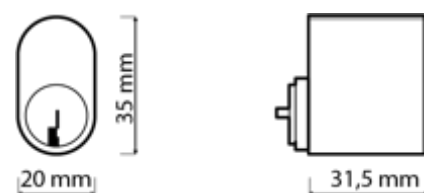
A	B	C	D	E	F
24	6	19	35	40	14



ANCHOR 850-5 Oval

Grade 6 padlock for maximum security applications. Suitable for locking containers, construction machinery, warehouses and heavy sliding doors. The padlock is designed for mounting cylinders of the type Scandinavian oval cylinders. The cylinder is mounted in the same way as an 830-3 padlock. No coverplate is needed. Removable shackle is available as an option for applications with limited space. Another option is the weather protected version with concealed O-rings in the shackle holes.

- > Padlock body: 70mm hardened steel
- > Shackle: 15mm hardened steel
- > Plating: Chrome
- > Cylinder type: Oval
- > Shackle heights: 27
- > Certification: Class 5 according to SSF 014 rev 3.
Grade 6 according to EN 12320:2012
- > Options: Removable Shackle (RS)
Weather protected (WP)



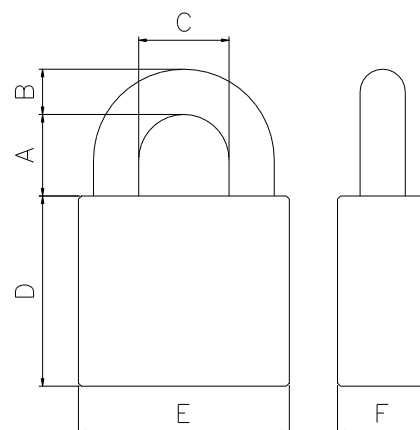
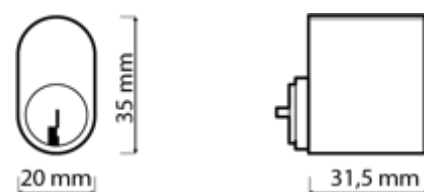
A	B	C	D	E	F
27	15	30	70 / 92 PS	70	30



ANCHOR 848-4 Oval

Grade 5 padlock for very high security applications. Suitable for locking containers, train wagons, warehouses and heavy sliding doors. The padlock is designed for mounting cylinders of the type Scandinavian oval cylinders. The cylinder is mounted in the same way as an 830-3 padlock. No coverplate is needed. Removable shackle is available as an option for applications with limited space. Another option is the weather protected version with concealed O-rings in the shackle holes.

- > Padlock body: 70mm hardened steel
- > Shackle: 15mm hardened steel
- > Plating: Chrome
- > Cylinder type: Oval
- > Shackle heights: 27 and 50mm
- > Certification: Class 4 according to SSF 014 rev 3.
Grade 5 according to EN 12320:2012
- > Options: Removable Shackle (RS)
Weather protected (WP)



A	B	C	D	E	F
27/50	15	30	70	70	30



Available in protected shackle version (PS)

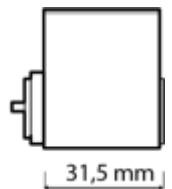


Available with a longer padlock body (XL)

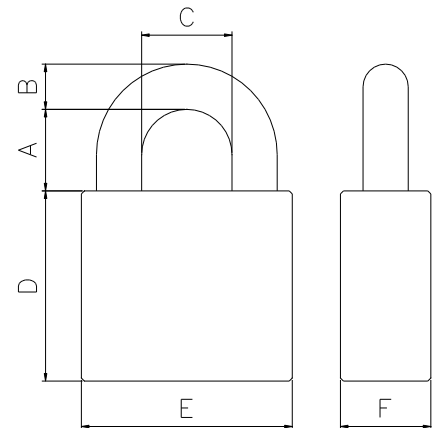


ANCHOR 840-4 Oval

Grade 5 padlock for very high security applications. Suitable for locking containers, train wagons, heavy sliding doors and the like. The padlock is designed to be used with a Scandinavian oval cylinder. The cylinder is protected by a 5mm thick hardened protection plate. Removable shackle is available as an option for applications with limited space. Another option is the weather protected version with concealed O-rings in the shackle holes. In order to fit a number of electronic cylinders with 10mm longer cylinder than standard an extended version is also available.



- > Padlock body: 80mm hardened steel
- > Shackle: 15mm hardened steel
- > Plating: Chrome
- > Cylinder type: Oval
- > Shackle heights: 27 and 50mm
- > Certification: Class 4 according to SSF 014 rev 3.
Grade 5 according to EN 12320:2012
- > Options: Removable Shackle (RS)
Weather protected (WP)
Protected Shackle (PS)
Extended (XL), D = 75mm



A	B	C	D	E	F
27/50	15	40	65 / 95 PS	80	30



Available in Weather Protected version (WP)



Available in Utility version



Available in protected shackle version (PS)

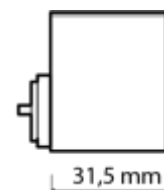


Available with a longer padlock body (XL)

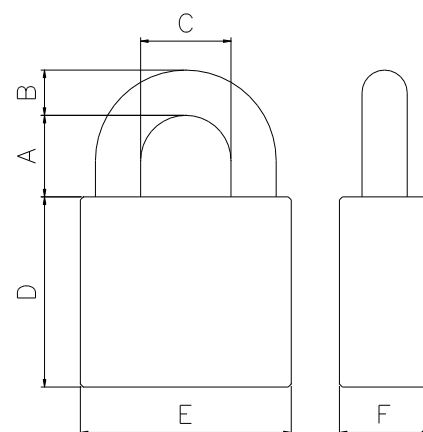


ANCHOR 830-3 Oval

Grade 4 padlock for high security applications. Suitable for locking motorcycles, trucks, road barriers and the like. The padlock is designed to be used with a Scandinavian oval cylinder. Removable shackle is available as an option for applications with limited space. Another option is the weather protected version with concealed O-rings in the shackle holes and a protective cap for the cylinder hole. The 830-3 padlock is also available in utility design, which is a design that optimize price vs performance and is the preferred choice when focus is on performance rather than finish. Lastly, in order to fit a number of electronic cylinders with 10mm longer cylinder than standard an extended version is also available.



- > Padlock body: 60mm hardened steel
- > Shackle: 11mm hardened steel
- > Plating: Chrome
- > Cylinder type: Oval
- > Shackle heights: 28 and 50mm
- > Certification: Class 3 according to SSF 014 rev 3.
Grade 4 according to EN 12320:2012
- > Options: Removable Shackle (RS)
Weather protected (WP)
Protected Shackle (PS)
Utility
Extended (XL), D = 72 mm



A	B	C	D	E	F
28/50	11	28	62 / 94 PS	60	25



Available in Weather Protected version (WP)

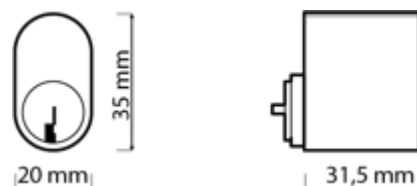


Available with a longer padlock body (XL)

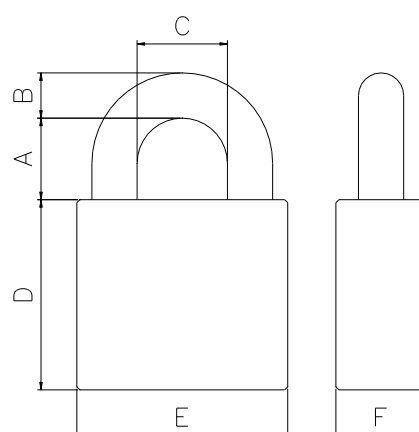


ANCHOR 802-2 Oval

Grade 3 padlock manufactured in all rust resistant materials. Suitable for locking toolboxes, lockers, trailers, power station switches and the like. The padlock is designed to be used with a Scandinavian oval cylinder. Delivered with shackle spring for pop up function as standard. As an option the padlock can be delivered with self-locking function or in weather protected version with concealed O-rings in the shackle holes and a protective cap for the cylinder hole.



- > Padlock body: 50mm brass
- > Shackle: 8mm stainless steel
- > Plating: Chrome
- > Cylinder type: Oval
- > Shackle heights: 25, 60 and 110mm
- > Certification: Class 2 according to SSF 014 rev 3.
Grade 3 according to EN 12320:2012
- > Options: Self Locking (SL)
Weather protected (WP)
Extended (XL), D = 72 mm



A	B	C	D	E	F
25/60/110	8	24	62	50	25

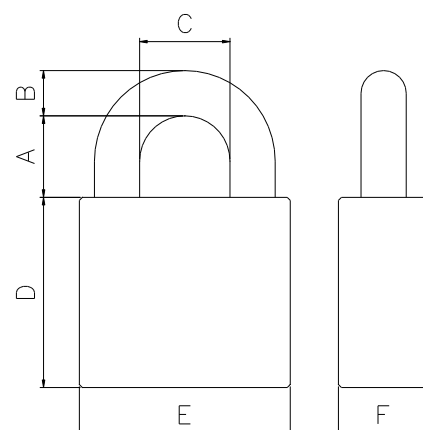
ANCHOR 802-2 Snowman



Grade 3 padlock manufactured in all rust resistant materials. Suitable for locking toolboxes, lockers, trailers, power station switches and the like. The padlock is designed to be used with a Snowman cylinder. Delivered with shackle spring for pop up function as standard. As an option the padlock can be delivered with self-locking function or with weather protected version with concealed O-rings in the shackle holes.



- > Padlock body: 46mm brass
- > Shackle: 8mm stainless steel
- > Plating: Chrome
- > Cylinder type: Snowman
- > Shackle heights: 25, 60 and 110mm
- > Certification: Class 2 according to SSF 014 rev 3.
Grade 3 according to EN 12320:2012
- > Options: Self Locking (SL)
Weather protected (WP)
Brass Finish (BR)



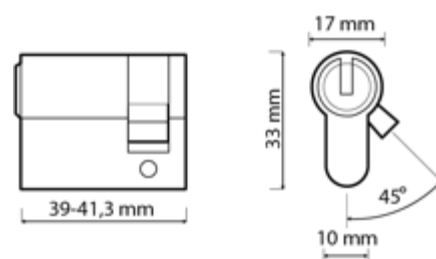
A	B	C	D	E	F
25/60/110	8	24	61	46	20



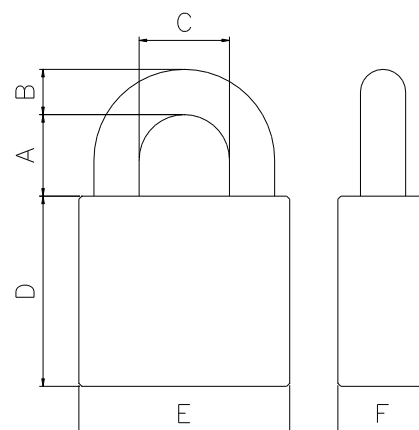
ANCHOR 590-6 Euro



Grade 6 padlock for maximum security applications. Suitable for locking containers, construction machinery, warehouses and heavy sliding doors. The padlock is designed to be used with a single Euro profile cylinder (total length 39-41.3mm). The cylinder is protected by a 11mm thick hardened protection plate. Removable shackle is available as an option for applications with limited space.



- > Padlock body: 80mm hardened steel
- > Shackle: 15mm hardened steel
- > Plating: Electroless Nickel
- > Cylinder type: Single Euro profile 30/10
- > Shackle heights: 27mm
- > Certification: Class 5 according to SSF 014 rev 3.
Grade 6 according to EN 12320:2012
- > Options: Removable Shackle (RS)



A	B	C	D	E	F
27	15	40	71 / 93 PS	80	35

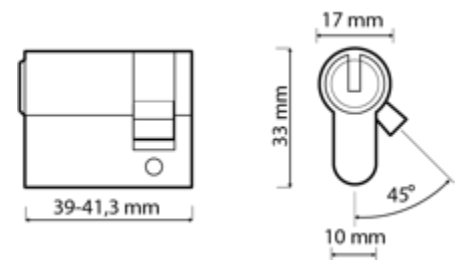


Available in Weather Protected version (WP)

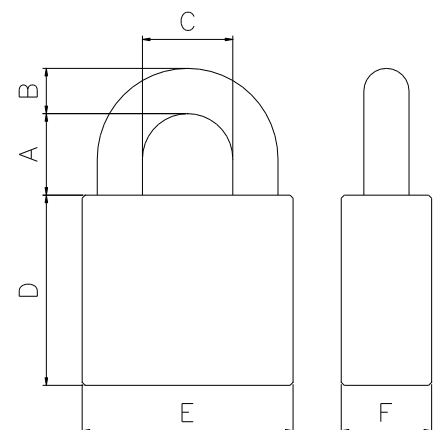


ANCHOR 580-5 Euro

Grade 5 padlock for very high security applications. Suitable for locking containers, warehouses and heavy sliding doors. The padlock is designed to be used with a single Euro profile cylinder (total length 39-41.3mm). The cylinder is protected by a 5mm thick hardened protection plate. Removable shackle is available as an option for applications with limited space. Another option is the weather protected version with a plastic cover for the body and a protective rubber gasket for the cylinder hole.



- > Padlock body: 80mm hardened steel
- > Shackle: 15mm hardened steel
- > Plating: Chrome
- > Cylinder type: Single Euro profile 30/10
- > Shackle heights: 27mm and 50mm
- > Certification: Grade 5 according to EN 12320:2012
- > Options: Removable Shackle (RS)
Weather protected (WP)



A	B	C	D	E	F
27/50	15	40	71	80	35



ANCHOR 801-1 Oval IP68

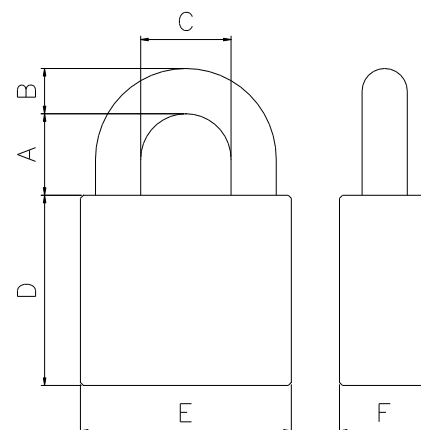
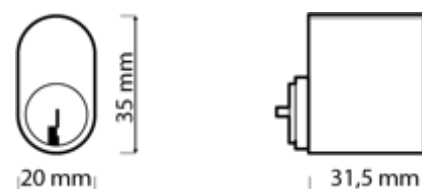
A Grade 2 padlock for oval cylinders where the cylinder is protected according to the IP68 standard. Suitable for locking in tougher environments, e.g. hatches, appliance cabinets and switches where a thinner diameter of shackle is usually required. The padlock is designed for mounting the standard Scandinavian oval cylinder and is supplied with O-rings in the shackle holes and with a tight, fold-out flap over the cylinder. Hermetically sealed. The rubber sealing is delivered in black as standard, but is available in several different colors to simplify the marking of e.g. area, belonging etc. Patented product.



This padlock is offered and manufactured on request.

A longer production time and a larger quantity are required for orders. MOQ 800 pcs

- > Padlock body: 60/51mm solid brass
- > Shackle: 5mm stainless steel
- > Plating: Chrome
- > Cylinder type: Oval
- > Shackle heights: 20mm & 50mm
- > Classification: Class 1 according to SSF 014 ed. 4.
Grade 2 according to EN 12320:2021
IP-class: IP68 Standard: EN 60529:1991
+ A1:2000 + A2:2013. IEC 60529:1989
+ A1:1999 + A2:2013.



A	B	C	D	E	F
20/50	5	24	71,5	60/51	25



Available with a longer padlock body (XL)

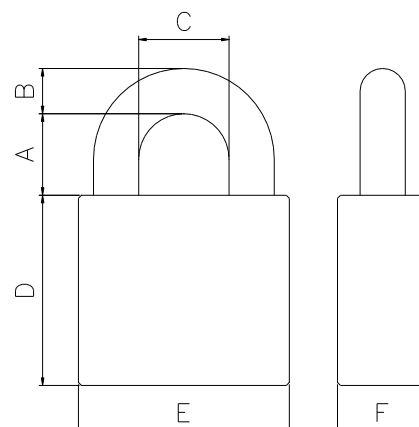
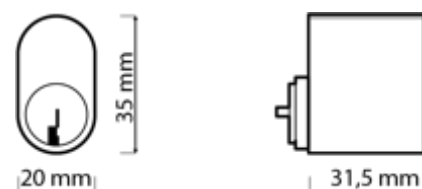


ANCHOR 802-2 Oval IP68

A Grade 3 padlock for oval cylinders where the cylinder is protected according to the IP68 standard. Suitable for locking in tougher environments, e.g. hatches, storehouse and basements. The padlock is designed for mounting the standard Scandinavian oval cylinder and is supplied with O-rings in the shackle holes and with a tight, fold-out flap over the cylinder. Hermetically sealed. The rubber sealing is delivered in black as standard, but is available in several different colors to simplify the marking of e.g. area, belonging etc. Patented product.



- > Padlock body: 60mm solid brass
- > Shackle: 8mm stainless steel
- > Plating: Chrome
- > Cylinder type: Oval
- > Shackle heights: 15, 25, 60 & 110mm
- > Classification: Class 2 according to SSF 014 ed. 4.
Grade 3 according to EN 12320:2021
IP-class: IP68 Standard: EN 60529:1991
+ A1:2000 + A2:2013. IEC 60529:1989
+ A1:1999 + A2:2013.



- > Options: Extended (XL), D = 87 mm

A	B	C	D	E	F
15/25/60/110	8	24	77	60	25

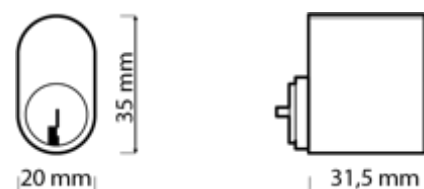


Available with a longer padlock body (XL)

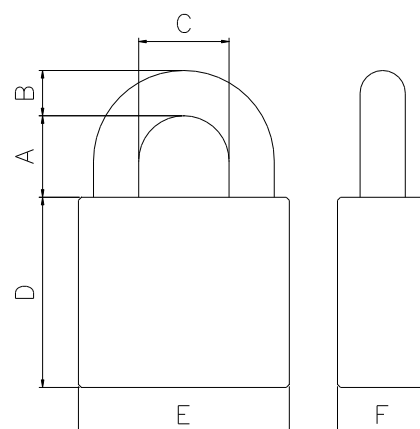


ANCHOR 830-3 Oval IP68

A Grade 4 padlock for oval cylinders where the cylinder is protected according to the IP68 standard. Suitable for locking in tougher environments, e.g. hatches, road barriers, gates or similar. The padlock is designed for mounting the standard Scandinavian oval cylinder and is supplied with O-rings in the shackle holes and with a tight, fold-out flap over the cylinder. Hermetically sealed. The rubber sealing is delivered in black as standard, but is available in several different colors to simplify the marking of e.g. area, belonging etc. Patented product



- > Padlock body: 60mm hardened steel
- > Shackle: 11mm hardened steel
- > Plating: Chrome
- > Cylinder type: Oval
- > Shackle heights: 28, 35 & 50mm
- > Classification: Class 3 according to SSF 014 ed. 4.
Grade 4 according to EN 12320:2021
IP-class: IP68 Standard: EN 60529:1991
+ A1:2000 + A2:2013. IEC 60529:1989
+ A1:1999 + A2:2013.



- > Options: Extended (XL), D = 89 mm

A	B	C	D	E	F
28/35/50	11	28	79	60	25





Available with a longer padlock body (XL)

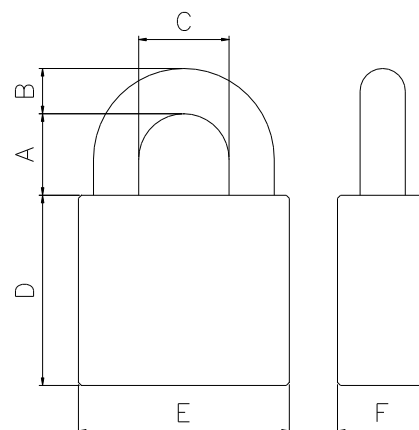
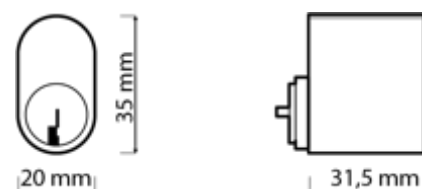


ANCHOR 848-4 Oval IP68

A strong Grade 5 padlock for oval cylinders where the cylinder is protected according to the IP68 standard. Suitable for locking in tougher environments, e.g. containers, warehouses, gates or similar. The padlock is designed for mounting the standard Scandinavian oval cylinder and is supplied with O-rings in the shackle holes and with a tight, fold-out flap over the cylinder. Hermetically sealed. The rubber sealing is delivered in black as standard, but is available in several different colors to simplify the marking of e.g. area, belonging etc. Patented product.



- > Padlock body: 70mm hardened steel
- > Shackle: 15mm hardened steel
- > Plating: Chrome
- > Cylinder type: Oval
- > Shackle heights: 27 & 50mm
- > Classification: Class 4 according to SSF 014 ed. 4.
Grade 5 according to EN 12320:2021
IP-class: IP68 Standard: EN 60529:1991
+ A1:2000 + A2:2013. IEC 60529:1989
+ A1:1999 + A2:2013.



- > Options: Extended (XL), D = 97 mm

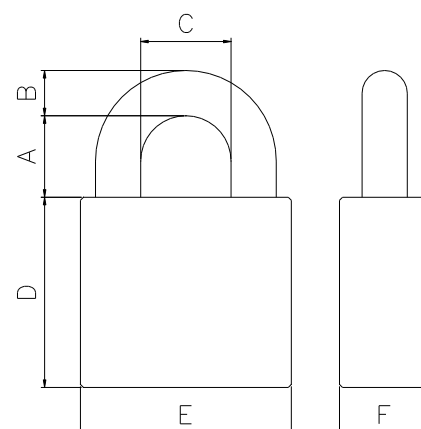
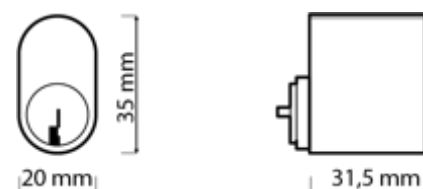
A	B	C	D	E	F
27/50	15	30	87	70	30



ANCHOR 850-5 Oval IP 68

A very strong Grade 6 padlock for oval cylinders where the cylinder is protected according to the IP68 standard. Suitable for locking in tougher environments, e.g. containers, gates, construction equipment, critical infrastructure or similar. The padlock is designed for mounting the standard Scandinavian oval cylinder and is supplied with O-rings in the shackle holes and with a tight, fold-out flap over the cylinder. Hermetically sealed. The rubber sealing is delivered in black as standard, but is available in several different colors to simplify the marking of e.g. area, belonging etc. Patented product.

- > Padlock body: 70mm hardened steel
- > Shackle: 15mm hardened steel
- > Plating: Chrome
- > Cylinder type: Oval
- > Shackle height: 27mm
- > Classification: Class 5 according to SSF 014 ed. 4.
Grade 6 according to EN 12320:2021
IP-class: IP68 Standard: EN 60529:1991
+ A1:2000 + A2:2013. IEC 60529:1989
+ A1:1999 + A2:2013.



A	B	C	D	E	F
27	15	30	87/109IB	70	30



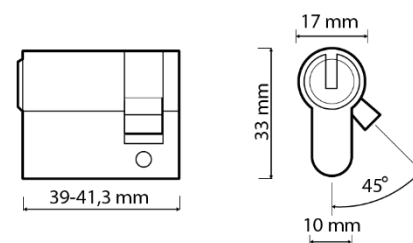
Correct image coming soon!



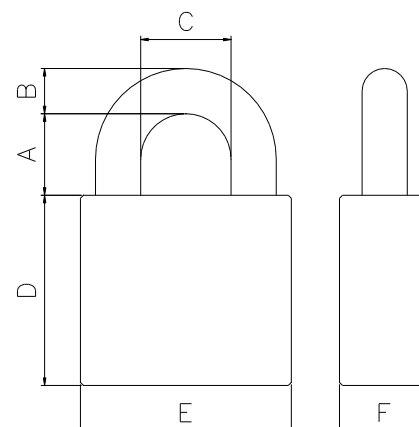
Correct image coming soon!

ANCHOR 560-3 EP IP68

A Grade 3 padlock for Euro profile cylinders where the cylinder is protected according to the IP68 standard. Suitable for locking in tougher environments with medium security, e.g. storehouse, sheds, small gates or similar. The padlock is designed for mounting the standard single euro profile cylinder and is supplied with O-rings in the shackle holes and with a tight, fold-out flap over the cylinder. Hermetically sealed. The rubber sealing is delivered in black as standard, but is available in several different colors to simplify the marking of e.g. area, belonging etc. Patented product



- > Padlock body: 60mm Solid brass
- > Shackle: 8mm Stainless steel
- > Plating: Chrome
- > Cylinder type: Single Euro profile (uncut)
- > Shackle heights: 15, 25, 60, 110mm
- > Classification: Class 2 according to SSF 014 ed. 4.
Grade 3 according to EN 12320:2021
IP-class: IP68 Standard: EN 60529:1991
+ A1:2000 + A2:2013. IEC 60529:1989
+ A1:1999 + A2:2013.



A	B	C	D	E	F
15/25/60/110	8	24	69	60	30



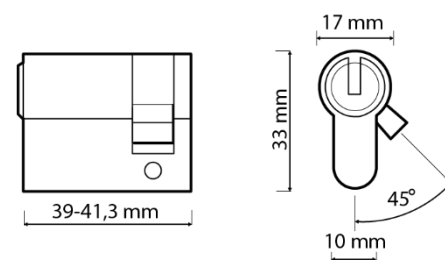
Correct image coming soon!



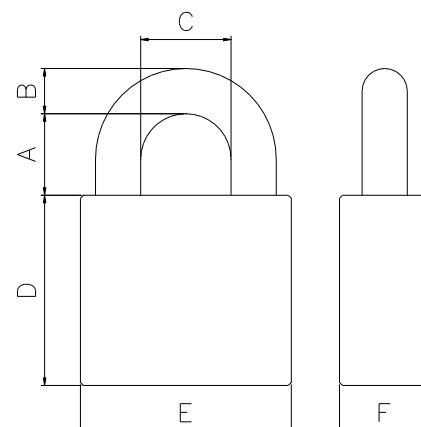
Correct image coming soon!

ANCHOR 570-4 EP IP68

A Grade 4 padlock for Euro profile cylinders where the cylinder is protected according to the IP68 standard. Suitable for locking in tougher environments with high security, e.g. gates, bollards, storage units, containers or similar. The padlock is designed for mounting the standard single euro profile cylinder and is supplied with O-rings in the shackle holes and with a tight, fold-out flap over the cylinder. Hermetically sealed. The rubber sealing is delivered in black as standard, but is available in several different colors to simplify the marking of e.g. area, belonging etc. Patented product



- > Padlock body: 60mm hardened steel
- > Shackle: 11mm hardened steel
- > Plating: Chrome
- > Cylinder type: Single Euro profile (uncut)
- > Shackle heights: 28, 35 & 50mm
- > Classification: Class 3 according to SSF 014 ed. 4.
Grade 4 according to EN 12320:2021
IP-class: IP68 Standard: EN 60529:1991
+ A1:2000 + A2:2013. IEC 60529:1989
+ A1:1999 + A2:2013.



A	B	C	D	E	F
28/35/50	11	28	72	60	30



ANCHOR 510-1 Switch lock

The smallest padlock on the market suitable for oval cylinder. Specially design for infrastructure projects, safety switches, appliance cabinets and for locking points where a thinner shackle is required. Unique padlock with patented design and wide range of options. Prepared for mounting mechanical or electromechanical cylinder with fixed driver.

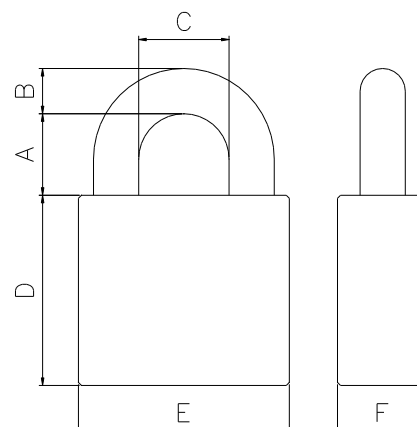
Shorter screws must be used when mounting iLOQ's cylinder

Item no: 2283013



- > Padlock body: 40mm brass
- > Shackle: 5mm Stainless steel
- > Plating: Solid brass
- > Cylinder type: Oval
- > Shackle height: 20mm och 50mm
- > Classification: Ungraded

- > Options:
 - O-ring sealed (EL)
 - Cover black
 - Cover red



A	B	C	D	E	F
20/50	5	18	25	40	22



ANCHOR 510-1 Switch lock EL



The smallest padlock on the market suitable for oval cylinder.

Specially design for infrastructure projects, safety switches, appliance cabinets and for locking points where a thinner shackle is required.

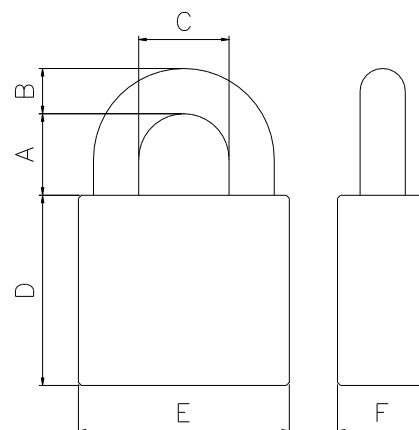
Unique padlock with patented design and wide range of options.

Prepared for mounting Scandinavian standard oval cylinder or electronic cylinders with knob and free-rotating driver.

Shorter screws must be used when mounting iLOQ's cylinder.

Item no: 2283013

- > Padlock body: 40mm brass
- > Shackle: 5mm Stainless steel
- > Plating: Solid brass
- > Cylinder type: Oval
- > Shackle height: 20mm och 50mm
- > Classification: Ungraded
- > Options:
 - Cover black
 - Cover red



A	B	C	D	E	F
20/50	5	18	25	40	22

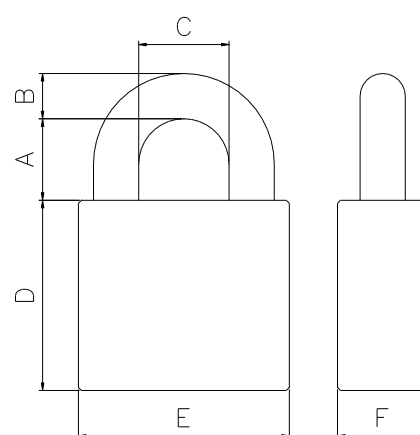
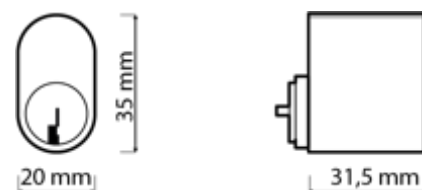


ANCHOR 530-3 Block Lock

A block lock in a smaller format. Designed for mounting the standard Scandinavian oval cylinder. Suitable for locking containers, gates, shutters and chains. The end knob of the shackle is designed to break during an attack to further increase the security. As an alternative there is a Utility version, which is made to optimize price performance rather than finish.

- > Padlock body: 60mm hardened steel
- > Shackle: 10mm hardened steel
- > Plating: Chrome
- > Cylinder type: Oval
- > Shackle heights: 11,5mm
- > Classification: No grade

- > Options: Utility

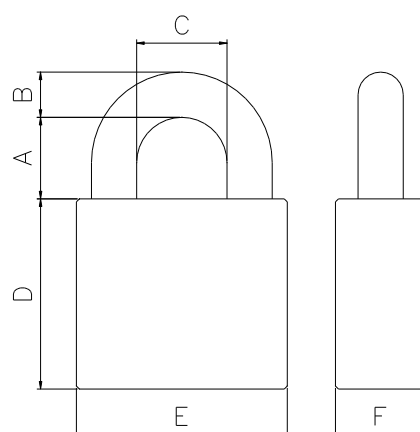


A	B	C	D	E	F
11,5	10	20	66	60	25

ANCHOR 375-40 Combination

A well-built combination padlock made entirely of stainless materials. Suitable for locking wardrobes, toolboxes and similar when there is limited safety requirements. 4-digit code.

- > Padlock body: 40mm
- > Shackle: 6mm Stainless steel
- > Plating: Brass on body
- > Cylinder type: Combination
- > Shackle heights: 26mm
- > Classification: Ungraded

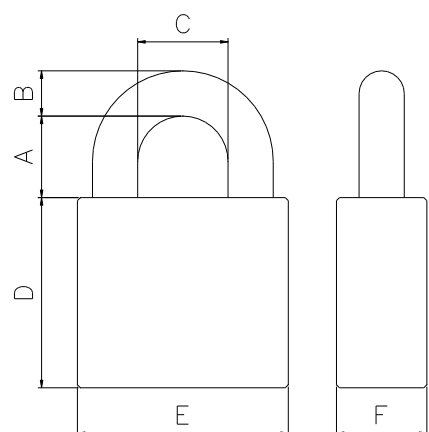


A	B	C	D	E	F
26	6	21,5	46	40	16

ANCHOR 375-30 Combination

A well-built combination padlock made entirely of stainless materials. Suitable for locking wardrobes, toolboxes and similar when there is limited safety requirements. 3-digit code.

- > Padlock body: 30mm
- > Shackle: 5mm Stainless steel
- > Plating: Brass on body
- > Cylinder type: Combination
- > Shackle heights: 25mm
- > Classification: Ungraded



A	B	C	D	E	F
25	5	14,5	36	30	13

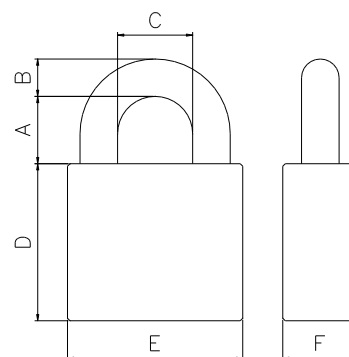


ANCHOR 350 Series



Ungraded padlocks manufactured in brass with shackle in hardened steel. Suitable for locking lockers, toolboxes, and the like with limited security needs. Cylinder of pin cylinder design. Spring-loaded shackle. The key can be withdrawn in both locked and unlocked position. Padlocks 350-25 and 350-35 have 4 pins, padlocks 350-45 and 350-60 have 5 pins.

- > Padlock body: Brass
- > Shackle: Hardened steel
- > Plating: Brass on body, chrome on shackle.
- > Cylinder type: Pin cylinder
- > Shackle heights: See table.
- > Option: Carded (CARDED)
Keyed Alike (KA)
2 x Pack (TW)



Article	A	B	C	D	E	F	Options	Cylinder
PADLOCK 350/25	14	4	13	25	25	11.5	STD	4-PIN
PADLOCK 350/35 STD	19	5.5	19	29.5	35	13.5	STD	4-PIN
PADLOCK 350/35-75 STD	75	5.5	19	29.5	35	13.5	STD	4-PIN
PADLOCK 350/45 STD	25.5	7	24.5	35	45	14.5	STD	5-PIN
PADLOCK 350/45-75 STD	75	7	24.5	35	45	14.5	STD	5-PIN
PADLOCK 350/45-150 STD	150	7	24.5	35	45	14.5	STD	5-PIN
PADLOCK 350/60 STD	34	9.5	34.5	43	60	18	STD	5-PIN



Hasp 921 combined with an ANCHOR 590-6 RS padlock to meet grade 6 requirements.

ANCHOR Hasp 921 & 923



Very heavy-duty hasp certified according to SSF018 class 5 and EN 12320 grade 6. The complete hasp is manufactured in hardened powder coated steel. When completely assembled the padlock, shackle is fully integrated in the hasp. Should be used with ANCHOR 590-6 RS to meet grade 6 and ANCHOR 840-4 PS RS to meet grade 5 requirements.

Assembly kit (bolts, washers, nuts) included. Fits padlocks with shackle size up to 15mm in diameter.

- > Dimensions: 130 x 78 mm
- > Plate thickness: 6 mm
- > Shackle hole: To be used with max 15mm shackle diam.
- > Plating: Black powder coating
- > Certification: Class 5 according to SSF018 rev 3
Grade 6 according to EN 12320:2012

A **right-hand** door has hinges on the right when you open it.

A **left-hand** door has hinges to the left when you open it.



ANCHOR Hasp 901 & 903



Heavy duty hasp certified according to SSF018 class 3 and EN 12320 grade 4.

The complete hasp is manufactured in hardened powder coated steel.

Assembly kit (bolts, washers, nuts) included. Fits padlocks with shackle size up to 15mm in diameter.

- > Dimensions: 130 x 78 mm
- > Plate thickness: 6 mm
- > Shackle hole: To be used with max 15mm shackle diam.
- > Plating: Black powder coating
- > Certification: Class 3 according to SSF018 rev 3
Grade 4 according to EN 12320:2012

A **right-hand** door has hinges on the right when you open it.

A **left-hand** door has hinges to the left when you open it.



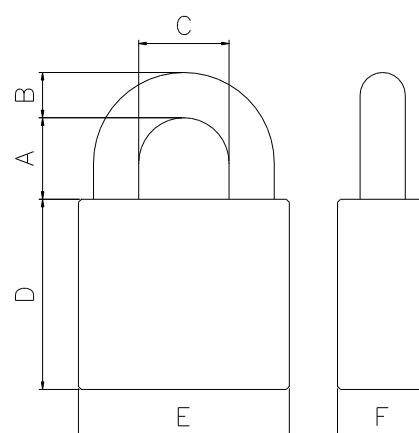
ANCHOR 960-3 Shared locking



A strong and weatherproof Grade 4 padlock designed for shared locking. This innovative padlock is designed as a lockable fitting with a sliding bolt and a fixed knob, making it easy and convenient to handle the locking for shared access. The design allows for controlled and secure use, which is particularly practical in situations where multiple parties share access to the same area, such as road barriers crossing or area gates where multiple parties need access.



- > Padlock body: 60mm hardened steel
- > Shackle: 11mm hardened steel
- > Plating: Chrome
- > Cylinder type: Fixed knob
- > Shackle heights: 28mm & 50mm
- > Classification:
 - Class 3 according to SSF 014 ver 4.
 - > Requires locking with 2 padlocks
 - SSF014 class 3
 - Grade 4 according to EN 12320:2021
 - > Requires locking with 2 padlocks
 - EN12320 grade 4



A	B	C	D	E	F
28/50	11	24	54	60	25

- > Options:
 - Loop
 - Padlock chain



ANCHOR Hasp 950



Heavy duty hasp manufactured in hardened powder coated steel. Designed with concealed screw fixing. Assembly kit (screws, washers, nuts, drill) included. Fits padlocks with shackle size up to 14mm in diameter.

- > Dimensions: 230 x 75 mm
- > Shackle thickness: 12 mm
- > Shackle hole: To be used with max 14mm shackle diam.
- > Plating: Black powder coating
- > Certification:

ANCHOR Hasp 940



The complete hasp and staple are manufactured in hardened galvanized steel. Designed with concealed screw fixing. Fits padlocks with shackle size up to 11mm in diameter.

- > Dimensions: 125 x 44 mm
- > Shackle thickness: 8.5 mm
- > Shackle hole: To be used with max 11mm shackle diam.
- > Plating: Galvanized

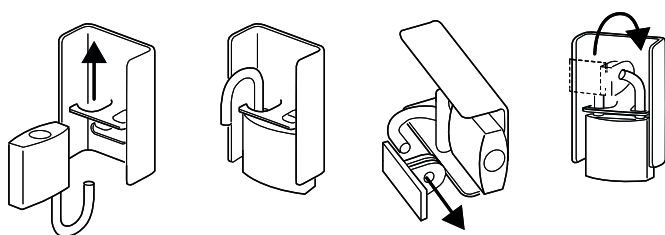


ANCHOR Shackle shield 915



ANCHOR Shackle shield 915 protects small shackles from being cut off by a bolt cropper. The Shackle shield can be used with a variety of padlocks of 35-40mm in size, but we suggest it to be used in combination with the ANCHOR 410-1 padlock. The shackle protection is recommended to be used on lockers placed in public areas such as gyms, swimming areas, schools, etc.

Assembled according to below illustration.



- > Dimension: 70 x 48 mm
- > Material: Stainless steel

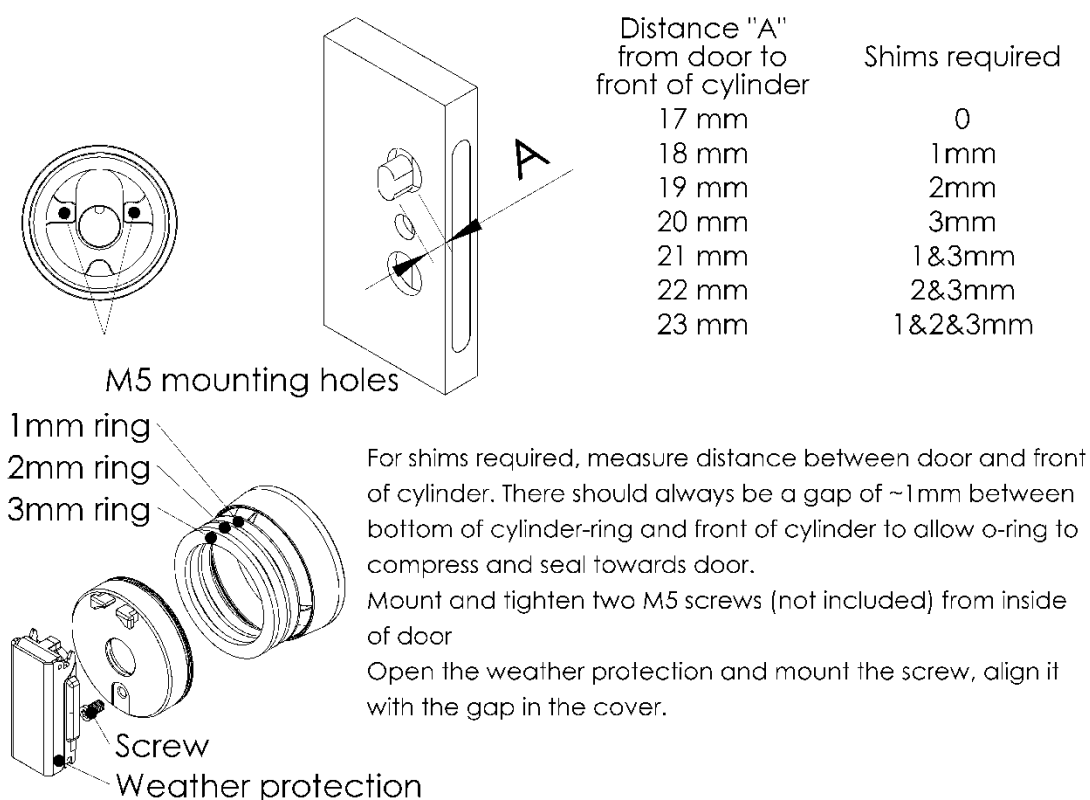


ANCHOR CYLINDER COVER IP68 OVAL

Cylinder cover IP68 is solid climate protection for oval cylinders. Effectively protects against road salt, dust, moisture and freezing in challenging environments. The protection is easily mounted as a cylinder ring and has a flexible dimension thanks to the supplied distance rings. The weather cover comes with a black rubber seal as standard. Yellow, blue, red and green seals are available on request.



- > Diameter : 69mm
- > Length: 40mm incl. cover
- > Material: Inside brass, ring in stainless steel
- > Classification: IP-class: IP68 Standard: EN 60529:1991
+ A1:2000 + A2:2013. IEC 60529:1989
+ A1:1999 + A2:2013.



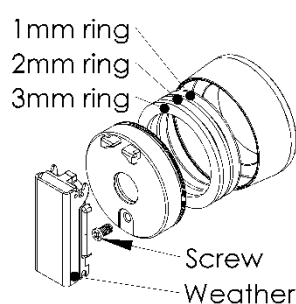
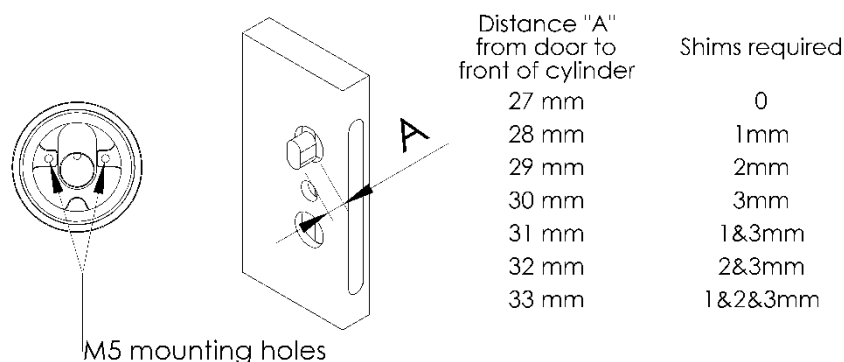


ANCHOR CYLINDER COVER IP68 XL OVAL



Cylinder cover IP68 XL is solid climate protection for iLOQ's cylinder and in those cases where the oval cylinder has a longer protrusion. Effectively protects against road salt, dust, moisture and freezing in challenging environments. The protection is easily mounted as a cylinder ring and has a flexible dimension thanks to the supplied distance rings. The weather cover comes with a black rubber seal as standard. Yellow, blue, red and green seals are available on request.

- > Diameter : 69mm
- > Length: 44mm incl. cover
- > Material: Inside brass, ring in stainless steel
- > Classification: IP-class: IP68 Standard: EN 60529:1991
+ A1:2000 + A2:2013. IEC 60529:1989
+ A1:1999 + A2:2013.



For shims required, measure distance between door and front of cylinder. There should always be a gap of ~1mm between bottom of cylinder-ring and front of cylinder to allow o-ring to compress and seal towards door. Mount and tighten two M5 screws (not included) from inside of door. Open the weather protection and mount the screw, align it with the gap in the cover.





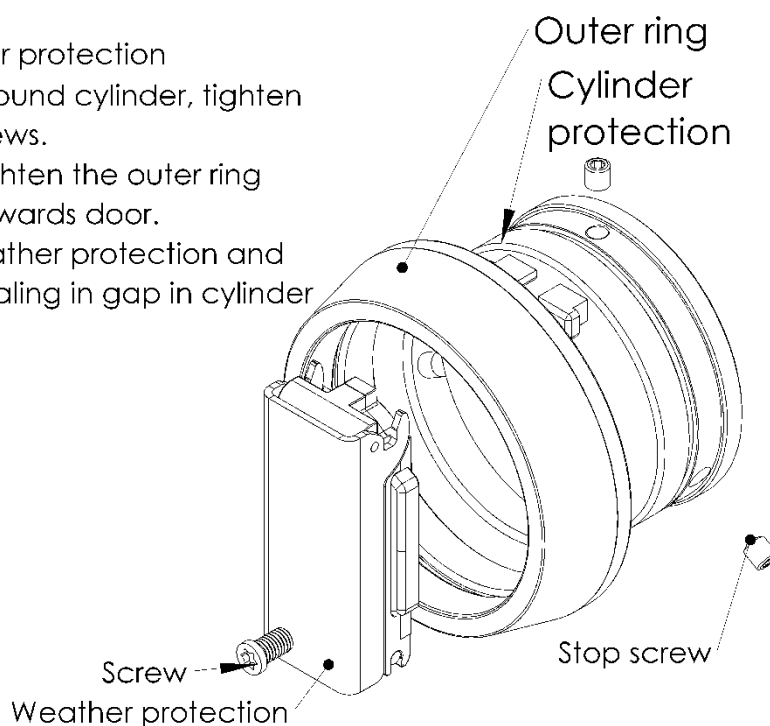
ANCHOR CYLINDER COVER IP68 Round

Cylinder cover IP68 is solid climate protection for round cylinders sitting in challenging environments. Effectively protects against road salt, dust, moisture and freezing. The inner part is fixed to the cylinder, whereby the cylinder ring itself is threaded, pulled tight against the door leaf and puts the inner part in tension slightly. The weather cover comes with a black rubber seal as standard. Yellow, blue, red and green seals are available on request.



- > Diameter : 79mm
- > Length: 42mm incl. cover
- > Material: Inside brass, outer ring stainless steel
- > Classification: IP-class: IP68 Standard: EN 60529:1991
+ A1:2000 + A2:2013. IEC 60529:1989
+ A1:1999 + A2:2013.

Mount cylinder protection tight against round cylinder, tighten the 3 stop screws.
Mount and tighten the outer ring until it seals towards door.
Open the weather protection and mount screw, align in gap in cylinder ring.





ANCHOR COVER IP68



Fold out covers for Padlock IP68 and Cylinder cover IP68. The cover is delivered complete with screw with thread seal and hinge. The sealing is molded into the cover. Black sealing is supplied as standard.

- > Length: 60mm
- > Material cover: Stainless steel
- > Material sealing: Silicon
- > Option: Red, Blue, Yellow & Green





ANCHOR Weather Protection



The weather protection is made of a weather resistant special plastic which close tightly against the padlock body. The tight fit makes it difficult for dust and water to penetrate through the padlock cylinder side.

> Grade 4 fits ANCHOR 800-3, 830-3, 833-3, 834-4, KABA 313, iLOQ grade 4 gen 1 and EVVA EPS grade 4.

> Grade 3 fits ANCHOR 802-2 Oval, KABA 9022 and iLOQ grade 3 gen 1 **Note! Does not fit 802-2 Snowman.**



ANCHOR Vandal ring



ANCHOR Vandal ring, a solid impact and collision protection in a universal design. Reinforced edge at the back to distribute force in the event of a lateral break. Fits most electronic cylinders with knob on the market. Delivered without M5 shear screw.



- > Outer diameter: 62mm
- > Inner diameter: 50mm
- > Material: Surface-treated brass
- > Cylinder type: Oval with knob
- > Classification: Unclassified

ANCHOR Padlock chain



An attachment chain makes it easier to ensure that the padlock does not get mislaid while the object that it secures is open. The chain must not be used as part of a security installation. To be assembled during assembly of the padlock.

- > Length of chain: 500mm
- > Chain: 5mm diameter, steel.
- > Plating: Bright galvanized

ANCHOR Padlock chain - retrofit.



An attachment chain makes it easier to ensure that the padlock does not get mislaid while the object that it secures is open. The chain must not be used as part of a security installation. Possible to retrofit on already assembled padlocks.

The retrofittable padlock chain consists of a wall mount, a chain, and a shackle bracket. These can be ordered separately or as a kit.

Anchor wall mount is used to anchor the chain to a wall or a beam.

Anchor shackle bracket is used to fasten the chain to the padlock shackle. The bracket is secured to the shackle with a rivet.

- > Length of chain: 400mm
- > Chain: 4mm diameter
- > Shackle of wall mount: 6.5mm diameter
- > Material: All components in stainless steel





ANCHOR Camlock 890



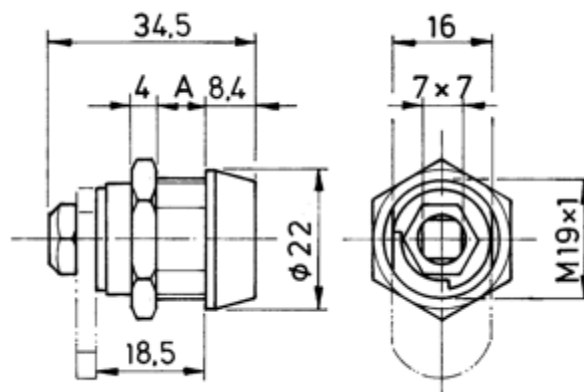
A most reliable security camlock available for vending machines, coin boxes, slot machines, lockers, and other high security applications. The camlock fits doors with 16/19 hole and door thickness up to 7,5mm. The camlock holds 8 discs providing about 300.000 locking combinations. The cam is rotated 90 degrees and can only be removed in locked position. Right hand turning as standard and left hand on request. Two keys included as standard. In the carded packaging a catch is included. Cylinder drum, code discs and end nut made of brass. Cam, governor, nut lock washer and hex nut made of zinc plated steel. Cylinder housing made of chrome plated brass.

ANCHOR Disc cylinder

- > ANCHOR Disc cylinder, 8 discs, 300.000 different key combinations.
- > The cylinder has no spring-loaded parts, which in other types of mechanism can cause malfunction through wear, dirt, moisture, corrosion or freezing.
- > Maximum resistance against picking and manipulation.
- > All our padlocks and camlocks can be made to operate with just one key.
- > Our extra strong key, thickness 3 mm, is made of nickel silver. The key is design patented.



- > Locking body: Brass
- > Key: 3mm Nickel silver
- > Plating: Chrome
- > Cylinder type: ANCHOR Disc cylinder
- > Options:
 - Carded (CARDED)
 - Keyed Alike (KA)
 - Master Key System (MK)
 - Excluding discs and keys (EXCL DISCS)
 - Completion of Keyed Alike (COMP KA)
 - Completion of Master Key System (COMP MK)





ANCHOR Camlock 892



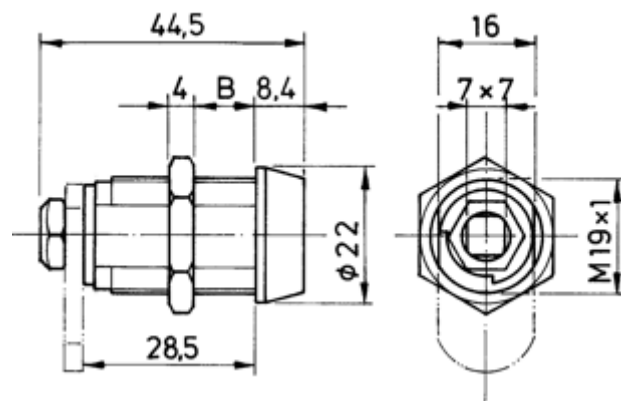
A most reliable security camlock available for vending machines, coin boxes, slot machines, lockers, and other high security applications. The camlock fits doors with 16/19 hole and door thickness up to 22,5mm. The camlock holds 9 discs providing about 1.500.000 locking combinations. The cam is rotated 90 degrees and can only be removed in locked position. Right hand turning as standard and left hand on request. Two keys included as standard. In the carded packaging a catch and a fixing plate is included. Cylinder drum, code discs and end nut made of brass. Cam, governor, nut lock washer and hex nut made of zinc plated steel. Cylinder housing made of chrome plated brass.

ANCHOR Disc cylinder

- > ANCHOR Disc cylinder, 9 discs, 1.5 million different key combinations.
 - > The cylinder has no spring-loaded parts, which in other types of mechanism can cause malfunction through wear, dirt, moisture, corrosion or freezing.
 - > Maximum resistance against picking and manipulation.
 - > All our padlocks and camlocks can be made to operate with just one key.
 - > Our extra strong key, thickness 3 mm, is made of nickel silver.
- The key is design patented.



- > Locking body: Brass
- > Key: 3mm Nickel silver
- > Plating: Chrome
- > Cylinder type: ANCHOR Disc cylinder
- > Options:
 - Carded (CARDED)
 - Keyed Alike (KA)
 - Master Key System (MK)
 - Excluding discs and keys (EXCL DISCS)
 - Completion of Keyed Alike (COMP KA)
 - Completion of Master Key System (COMP MK)



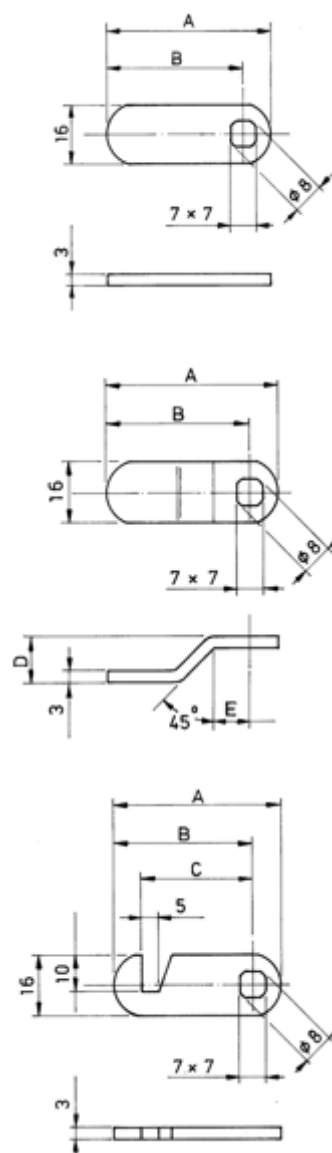


ANCHOR Camlock Accessories



Accessories for camlock 890/892.

Article nr	Article	Dimensions in mm				
		A	B	C	D	E
3100121	CATCH R121	21	13,5	-	-	-
3100131	CATCH R131	31	23,5	-	-	-
3100136	CATCH R136	36	28,5	-	-	-
3100140	CATCH R140	40	32,5	-	-	-
3100145	CATCH R145	45	37,5	-	-	-
3100150	CATCH R150	50	42,5	-	-	-
3100155	CATCH R155	55	47,5	-	-	-
3100236	CATCH H236	36	28,5	22	-	-
3100240	CATCH H240	40	32,5	26	-	-
3100245	CATCH H245	45	37,5	31	-	-
3100250	CATCH H250	50	42,5	36	-	-
3100255	CATCH H255	55	47,5	41	-	-
3100342	CATCH V342	42	34,5	-	12,5	9,5
3100347	CATCH V347	47	39,5	-	12,5	9,5
3100352	CATCH V352	52	44,5	-	12,5	9,5
3100438	CATCH V438	38	30,5	-	10,5	11
3100443	CATCH V443	43	35,5	-	10,5	11
3100448	CATCH V448	48	40,5	-	10,5	11
3100535	CATCH V535	35	27,5	-	7	11
3100539	CATCH V539	39	31,5	-	7	11
3100544	CATCH V544	44	36,5	-	7	11
3100549	CATCH V549	49	41,5	-	7	11
3100635	CATCH V635	35	27,5	-	6,5	11
3100639	CATCH V639	39	31,5	-	6,5	11
3100644	CATCH V644	44	36,5	-	6,5	11
3100649	CATCH V649	49	41,5	-	6,5	11
3100731	CATCH V731	31	23,5	-	5	11
3100736	CATCH V736	36	28,5	-	5	11
3100740	CATCH V740	40	32,5	-	5	11
3100745	CATCH V745	45	37,5	-	5	11
3100750	CATCH V750	50	42,5	-	5	11



ANCHOR - After sales service



Robust key cutting machine for cutting keys to ANCHOR disc cylinders.

- > Dimension (W x H x D): 300 x 210 x 350 mm
- > Weight: 16 kg



Indicator to read the code on an ANCHOR disc cylinder key.



Service Box, Disc Detainer locks - Standard.

- > Components to build Key Differ and Keyed Alike groups.



Service box, Disc detainer locks - Master Key System.

- > Components to build Key Differ, Keyed Alike groups and Master Key Systems.



Service box,

- > Components for padlock Grade 3, Grade 4 & Grade 5, Oval cylinder





ANCHOR GREASE



ANCHOR LOCK GREASE is a high-quality lubricating grease with extremely good water resistance and optimized anti-corrosion features. The grease provides effective protection against wear and tear of the padlock's moving parts, e.g. actuators, balls and shackle holes. Recommended temperature range -30°C to +120°C.

- > Contains: 30 gram
- > Size: 30 x 95mm
- > Option: 1-piece
12-piece in box

ANCHOR Keys



Keys for ANCHOR cylinders.

Article nr	Article
1005501	CUT KEY 050/50
1005502	KEYBLANK 050/50
1015401	CUT KEY 150/40
1015402	KEYBLANK 150/40
1015501	CUT KEY 150/50
1015502	KEYBLANK 150/50
1025401	CUT KEY 250/40
1025402	KEYBLANK 250/40
1025501	CUT KEY 250/50
1025502	KEYBLANK 250/50
1035101	CUT KEY 350/19-20
1035102	KEYBLANK 350/19 ROUND GR
1035203	KEYBLANK 350/20/25 RECT GR
1035201	CUT KEY 350/25
1035202	KEYBLANK 350/25 ROUND GR
1035301	CUT KEY 350/35
1035302	KEYBLANK 350/35 ROUND GR
1035303	KEYBLANK 350/35 RECT GR
1035401	CUT KEY 350/45
1035402	KEYBLANK 350/45 ROUND GR
1035403	KEYBLANK 350/45 RECT GR
1035601	CUT KEY 350/60
1035602	KEYBLANK 350/60 ROUND GR
1035603	KEYBLANK 350/60 RECT GR
1175401	CUT KEY 750/40
1175402	KEYBLANK 750/40
1175501	CUT KEY 750/50
1175502	KEYBLANK 750/50
1180001	CUT KEY 800-892
1180002	KEYBLANK 800-892
1180006	CUT KEY 610-630
1180007	KEYBLANK 610-630



Keyblank 350 RECT GRIP



Keyblank 350 ROUND GRIP



Keyblank 800-892

ANCHOR Components

Article nr	Article
SHACKLES	
2280302	SHACKLE 800-3/830-3 S28
2280303	SHACKLE 800-3/830-3 S50
2280204	SHACKLE 802-2/820-2 S110 STAINLESS STEEL
2280201	SHACKLE 802-2/820-2 S15 STAINLESS STEEL
2280202	SHACKLE 802-2/820-2 S25 STAINLESS STEEL
2280203	SHACKLE 802-2/820-2 S60 STAINLESS STEEL
2281102	SHACKLE 810-1 S20 STAINLESS STEEL
2281103	SHACKLE 810-1 S80 STAINLESS STEEL
2284402	SHACKLE 840-4 S27
2284403	SHACKLE 840-4 S50
2288402	SHACKLE 880-4 S27
2288404	SHACKLE 880-4 S50
COVER PLATES	
2258521	COVER PLATE 580-5
2259602	COVER PLATE 590-6
2284411	COVER PLATE 840-4
CYLINDERS PADLOCK	
2258524	CYLINDER 580-5
1299810	CYLINDER 800-3 INCL 2 KEYS
1299805	CYLINDER 820-2 INCL 2 KEYS
1299820	CYLINDER 880-4 INCL 2 KEYS
1299730	ASSEMBLING CYL 800-3 EXCL KEYS
1299720	ASSEMBLING CYL 820-2 EXCL KEYS
1299740	ASSEMBLING CYL 880-4 EXCL KEYS
OTHER COMPONENTS FOR PADLOCKS	
2280221	POP-UP SHACKLE SPRING 802-2
2283007	FIXING PLATE 830-3
2281107	LOCKING BAR 800/810/820/892
2282208	LOCKING BAR 820-2,800-3
2282207	LOCK BUSHING 820-2
2280299	O-RING NBR 70 10,82 x 1,78
2258522	ACTUATOR 580-5/590-6
2259603	ACTUATOR 580-5/590-6 RS
2280306	ACTUATOR 800-3
2280308	ACTUATOR 800-3 RS
2280222	ACTUATOR 802-2 SNOWMAN MANUAL
2280225	ACTUATOR 802-2 SNOWMAN SELF LOCKING ASSEMBLED
2283011	ACTUATOR 830-3
2283012	ACTUATOR 830-3 RS

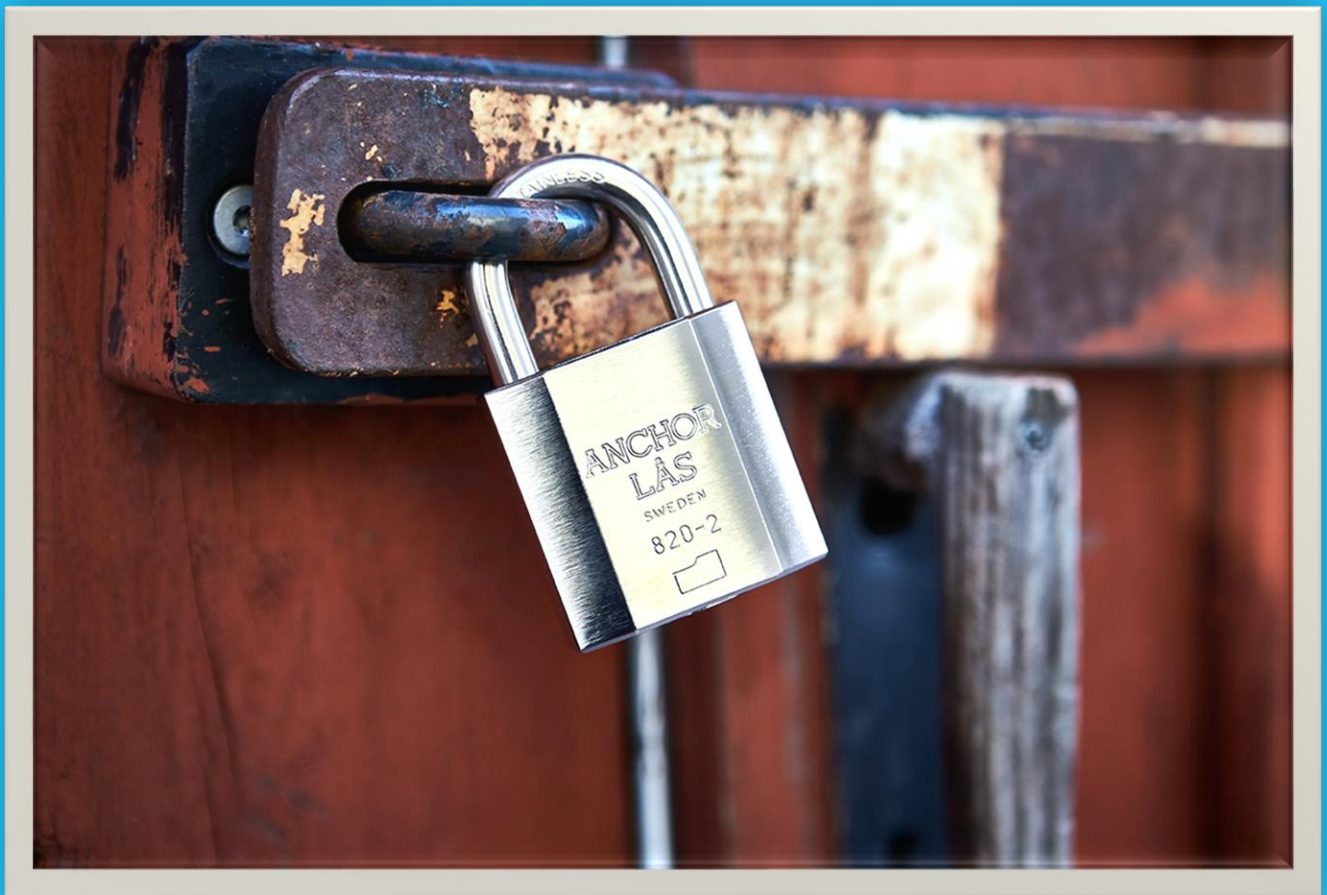


2284412	ACTUATOR 840-4
2284417	ACTUATOR 840-4 RS
2288406	ACTUATOR 880-4
2288417	ACTUATOR 880-4 RS
2281108	ACTUATOR SPRING 810-1/820-2/800-3
2284426	ACTUATOR SPRING 840-4
2288408	ACTUATOR SPRING 880-4
2283009	SCREW - ATTACHMENT WASHER FOR CYLINDER 830-3
2283008	SCREW - PADLOCK TO ATTACHMENT WASHER 830-3
2280224	SCREW - PADLOCK TO CYLINDER 802-2 SNOWMAN
2288407	SCREW - STOPSCREW 820/800/880
2284413	SCREW - COVER PLATE 840-4
2280223	STOP WASHER 802-2 SNOWMAN MANUAL
2282209	BALL BEARING GRADE 3 8mm
2280307	BALL BEARING GRADE 4 10mm
2284410	BALL BEARING GRADE 5 12mm
2258526	WEATHER PROTECTION PLUG 580-5 (KEYWAY)
2258527	WEATHER PROTECTION COVER 580-5 PADLOCK (BODY)
OTHER COMPONENTS FOR CAMLOCKS	
3099500	ADAPTER PLATE 892
3099300	NUT SMALL 890-892
3099200	NUT LARGE 890-892
3099400	LOCK WASHER FOR NUT
3099600	STOP WASHER 890-892
DISCS	
2387633	SPRING WASHER 11,6
2387663	SPRING WASHER 13,6
2387635	CODE DISC 11,6 STD 1
2387634	CODE DISC 11,6 STD 0
2387636	CODE DISC 11,6 STD 2
2387637	CODE DISC 11,6 STD 3
2387638	CODE DISC 11,6 STD 4
2387639	CODE DISC 11,6 SY 0.1
2387649	CODE DISC 11,6 SY 0.1.2
2387650	CODE DISC 11,6 SY 0.1.2.3
2387651	CODE DISC 11,6 SY 0.1.2.3.4
2387640	CODE DISC 11,6 SY 0.2
2387641	CODE DISC 11,6 SY 0.3
2387642	CODE DISC 11,6 SY 0.4
2387643	CODE DISC 11,6 SY 1.2
2387652	CODE DISC 11,6 SY 1.2.3
2387653	CODE DISC 11,6 SY 1.2.3.4
2387644	CODE DISC 11,6 SY 1.3
2387645	CODE DISC 11,6 SY 1.4
2387646	CODE DISC 11,6 SY 2.3
2387647	CODE DISC 11,6 SY 2.4
2387654	CODE DISC 11,6 SY 2-3-4
2387648	CODE DISC 11,6 SY 3.4



2387664	CODE DISC 13,6 STD 0
2387665	CODE DISC 13,6 STD 1
2387666	CODE DISC 13,6 STD 2
2387667	CODE DISC 13,6 STD 3
2387668	CODE DISC 13,6 STD 4
2387669	CODE DISC 13,6 SY 0.1
2387679	CODE DISC 13,6 SY 0.1.2
2387680	CODE DISC 13,6 SY 0.1.2.3
2387681	CODE DISC 13,6 SY 0.1.2.3.4
2387670	CODE DISC 13,6 SY 0.2
2387671	CODE DISC 13,6 SY 0.3
2387672	CODE DISC 13,6 SY 0.4
2387673	CODE DISC 13,6 SY 1.2
2387682	CODE DISC 13,6 SY 1.2.3
2387683	CODE DISC 13,6 SY 1.2.3.4
2387674	CODE DISC 13,6 SY 1.3
2387675	CODE DISC 13,6 SY 1.4
2387676	CODE DISC 13,6 SY 2.3
2387684	CODE DISC 13,6 SY 2.3.4
2387677	CODE DISC 13,6 SY 2.4
2387678	CODE DISC 13,6 SY 3.4
2387662	PROFILE WASHER 13,6
2387632	PROFILE WASHER 11,6
2300010	SERVICE BOX WITH STANDARD CODE DISCS
2300020	SERVICE BOX WITH SYSTEM AND STANDARD DISCS
KEYS	
1175412	MASTERKEY 750/40
1180012	MASTERKEY 800-892
1005500	KEY WITH LOCK 050/50
1015400	KEY WITH LOCK 150/40
1015500	KEY WITH LOCK 150/50
1025400	KEY WITH LOCK 250/40
1025500	KEY WITH LOCK 250/50
1035200	KEY WITH LOCK 350/25
1035300	KEY WITH LOCK 350/35
1035400	KEY WITH LOCK 350/45
1035600	KEY WITH LOCK 350/60
1180000	KEY WITH LOCK 800-892
1180901	KEYRING
ASSEMBLY TOOLS	
1301370	ASSEMBLY PLATE CYL
1301365	ASSEMBLY TOOL CYL 810-820
SERVICES	
1299500	CLEANING LOCK (net price per commenced hour)
1299510	SERVICE LOCK (net price per commenced hour)
5010220	SET UP FEE (net price per commenced hour)
5010225	LASER ENGRAVING (per padlock body type)





ANCHOR LÅS AB

Filargatan 3A

632 29 Eskilstuna

Sweden

Tel: +46 16 12 52 80

info@anchorlas.se

www.anchorlas.com